

*By* **enzo**

PLATINUM JEWELRY FOR MEN



# THE BRAND PHILOSOPHY

---

## *'Simplicity is The Ultimate Sophistication'*

Being established in 2002, ByEnzo focuses on men's meticulously-made platinum jewelry, bracelet, necklace, pendant, and ring, specializing in its excellent handmade craftsmanship spirit and temperament. To satisfy customers' preference of personalized ornament, ByEnzo offers Bespoke service as well. We have our fabulously professional and skillful artisans who can turn all the customers' designated designs into reality.

Our team of artisans and craft-specialists possess over 30 years of expertise and ingenuity in designing Platinum jewelry. From sketching design graphics to all sorts of creating processes, ByEnzo takes pride in being an overwhelmingly popular Platinum design studio, especially in the realm of designing and creating men's Platinum jewelry. We attribute our success to our impeccable craftsmanship spirit and based on this notion, we have gained worldwide recognition from our distinguished customers almost throughout the past two decades.

To further elaborate our brand's identity, we strive according to our motto: 'simplicity is the ultimate sophistication', which remains ByEnzo's core philosophy in creating every piece of jewelry. By wholeheartedly upholding this philosophy, all of our products are sophisticatedly made, with our customers' requirement our chief priority. As its name implies, ByEnzo's products tend to have a simple, neat and-classy design. The look of our jewelry emits extraordinarily noble and elegant feelings. If you also wish to enjoy this pride, we guarantee ByEnzo should be your brilliant choice.

Since 'the beauty of simplicity' is our core philosophy, what we use is the purest materials – Platinum; its pureness remains one of the elements formed naturally on earth. More importantly, Platinum is a type of precious metal which never fades. This justifies it is an ideal material to create ByEnzo's everlasting jewelry.

ByEnzo guarantees is customers can find the most delicate and treasured Men jewelry with its excellent craftsmanship and quality. Bearing the mission to deliver our admirable sophistication, our artisans and designers strive to uphold the brand's lofty mission—excelling our handmade Platinum jewelry to our honorable customers.





# OUR STORY

*We design, We create and  
We turn your story into reality*

Generally speaking, a vast majority of the population sees jewelry in a relatively feminine context, while our founder, though that is a stereotype and believed jewelry should be for everyone. Our founder, personally, is extremely interested in Men's jewelry, yet the supply of high-quality jewelry for men was in a lack. Even though it was hard to find a shop that sells finely made Men's jewelry, he managed to buy ornaments that made with copper or titanium from accessory shops or fast fashion boutiques. At first, as a college student, he was satisfied with the design of those accessories, but as time goes by, his standard towards jewelry has grown and insisted on wanting jewelry made from the best materials.

Since those materials are not durable at all, it has become an extremely annoying issue. He found out scratches were made easily even with small crushes, and the coating fades quickly after wearing for a couple of times.

Since our founder majored in Gem & Material Technology, he has started to use his knowledge in figuring out the best material for Men's jewelry. After countless researches, our founder succeeded in finding out the best material in creating Men's jewelry, which is Platinum.

Our founder saw commonalities between Platinum and gentleman; for example, the resistance, masculine, and dense temperaments best represent both. Also, the sleek and shiny texture after the casting process perfectly describes the soft and gentle character of a man as well. Therefore, Platinum seems to be the best material to represent a gentleman by looking into both outer and inner characteristics.

All over the years of our founder's career in the jewelry industry, he has mastered in creating the best Platinum jewelry, and according to his research in the past 30 years, he has also successfully researched on the ideal ratio in creating the most durable PT 950 Platinum that is the most suitable in creating Men's jewelry.

Today, ByEnzo has grown to become a Jewelry Designer Studio. 'We design, we create and we turn your story into reality' is our motto. By upholding the philosophy of 'Simplicity is the ultimate sophistication,' ByEnzo chose to focus on Platinum as the only primary material that we use—Aiming to deliver the best, highest quality and most exceptional Platinum jewelry to our valuable customers.



# GENUINE PLATINUM

*Korea Gold Exchange:  
Best quality ensured & Secured source*



ByEnzo is a platinum jewelry workshop, which is good at handling platinum. All jewelry uses the most reliable and the best quality platinum, each finished jewelry will be sent to the laboratory after a series of purity tests. To protect the consumers' rights and interests, ByEnzo will undoubtedly carry out platinum purity tests to ensure that the platinum content of 95% or more.

Although South Korea has not yet enforced regulation in imprinting purity marks, for the sake of our consumers, ByEnzo believes that a high degree of self-censorship is necessary. To ensure the purity of all platinum jewelry, we will send the related jewelry to the Korean Hanmi Jewelry Institute for purity inspection. All jewelry tested will receive a purity certificate, similar to the European Hallmarking certification mechanism. Every piece of jewelry sold by ByEnzo will ensure that the platinum purity is up to standard, and attach the relevant product certification certificate.





# Hallmark

ByEnzo is committed to bringing the highest quality jewelry to our customers; all finished products have passed rigorous quality inspection, especially platinum purity. We promise to provide you with the highest quality assurance, so each piece of inspected jewelry will be engraved with a purity approval mark, its year of manufacture, as well as our trademark to ensure that our distinguished customers receive the purest, most authentic and most perfect platinum, and are platinum jewelry that meets the PT 950 \* standard.

To provide a seamless after-sales service, we have done several actions, for example, your exclusive customer number will also be engraved on the jewelry you buy, and jewelry maintenance will be needed in the future to track down the production process and provide the corresponding after-sales service. Besides, ByEnzo's trademark is also engraved on the product to prove that it is the product of our brand.

ByEnzo only sells offline in Korea and online on the official website, so other channels of products are not jewelry made by this brand. ByEnzo treats guests like relatives, see in every detail. Whether you browse the online jewelry store at home or visit the branch store in person, we will choose the jewelry that suits you most according to your needs and professional knowledge. We believe that service is paramount, with a sincere heart to offer after-sales service, continue your pleasant experience in ByEnzo.

\*The platinum jewelry that has passed the purity test is engraved with the words of the "PT 950", the PT is the abbreviation of Platinum, and 950 is the overall 95% purity of the Platinum.



The Clasp shown above is used in the Standard and Dual Chains from the Earl Collection. For other clasp design, please refer to P.17.



# BESPOKE LINE

*Design your own jewelry with ByEnzo: Create the one and only one*



ByEnzo's workshop is located in Seoul, where there are artisans who specialize in making custom jewelry. Our master-class artisans can make the jewelry that suits your preferences. Custom jewelry is very suitable for the pursuit of every detail, strive for excellence. Experienced artisans have carefully examined every piece of jewelry, so we are very confident in the quality and quality of the product. We are not only a jewelry company but also a place where you can realize your wishes, as long as you say you look forward to it, you can tell us that ByEnzo will meet your needs.

In the past 20 years, we have created hundreds of pieces of exclusive jewelry for different people, which is loved and recognized by customers. Our founders are convinced that jewelry can express each of us the deepest self and the best partner for each of us, perhaps love and trust, freedom and independence, excitement and adventure, and so on. ByEnzo will listen to your heart and write your chapter with you, which can move your moving story.

From sketching to 3D modeling, ByEnzo invites you to work with us to create your jewelry and create your story as the craftsman behind you. We are confident that through your enthusiasm and artisans' techniques, with the best quality materials, we will get the perfect results. The length of the customization process depends on the complexity of the jewelry design, and we will be the best listener to learn your story and create the best platinum jewelry for you. After confirming your requirements, we will sketch and share the drafts with you, and if you have any other ideas, we will welcome them very much. A sample model will be made for you to have a general feeling before the actual creation. Although the order time will be relatively long, all the waiting for a better future and preparation must be very worthy.



# The Arabesque Pattern on Pendant

An Arabesque pattern has a long history not only in the Islamic countries, but also in Asia, like Japan and China. In Japan, the Arabesque pattern is called Karakusa (からくさもよう), and in China, it is called Tang Cao Wen (唐草纹). The main characteristic of this pattern is formed by several geometric patterns that look like plants. Arabesque has been appearing in different objects around the world, while the classic usage of Arabesque patterns should be the design on most of the architectures in the Islamic world.

ByEnzo finds the Arabesque pattern is an exquisite and dynamic design while clean and pleasant. Therefore, we have added this design element into our Adventurous Pendant Collection. The Arabesque design element is hidden on the back of the Fortune Compass and The Sea Anchor, formed by a combination of 4 different thicknesses of Platinum wire.

The Compass is a tool to guide you throughout the challenge, while the Arabesque design implicates the complexity and hassles in your life. By seeing the complexity yet pleasant Arabesque pattern, ByEnzo finds it a good fit with the Adventurous Collection's concept in delivering the perfect balance between simplicity and complexity.

You can engrave your initials on the pendant to show your characteristics and style. ByEnzo is aiming to deliver the best personalizing service to our distinguished customers for better customer experiences.



- The Arabesque pattern can trace back to hundreds and thousands of years ago; however, it is almost impossible to say where it originated while the main feature is that the Arabesque emphasizes leafy forms, the vine and floral structures in forming geometrical patterns.



*Zeus*  
Ref. 3PS117



*The Sea Anchor*  
Ref. 3PS181



*Apollo*  
Ref. 3PS105



*The Fortune Compass*  
Ref. 3PS181





THE EARL COLLECTION

# PLATINUM BRACELET

---

## *The Ultimate Sophisticated Design and Artisan's Skills*

The beauty of strength and alignment; Passion of being excel; Nobel and knightly symbol. Here we present you 'The Earl,' our classic Men's Jewelry Collection.

The Earl Collection is inspired by the peerage system from Europe; we believe the Earl Collection is the best and most suitable for gentleman who wants to show their nobility while keeping at a low profile. A peerage is a system comprising various hereditary titles, which can last for hundreds of years and therefore, ByEnzo believes that only the most durable material legitimately suits the Earl. While Platinum is famous for its dense weight and durability and changeless features, hence we see several commonalities between The Earl and Platinum.

In the Earl Collection, we would like to recommend two of our best sellers, 'Standard' and 'Dual' chain style. These chain designs are the best examples in showcasing the characteristic of Platinum, which is the dense feeling. You can wear the chain bracelet during your daily life, like to work or while playing sports. All of our designs aim to pursue the beauty of simplicity according to our beliefs in 'Simplicity is the Ultimate Sophistication.' To satisfy the need for daily usage, ByEnzo has been researching a perfect alignment of chain that could fit your body curve naturally. We check every chain connection for the best quality we are delivering. Furthermore, we understand that every person has different body shape or preferences; therefore, we are providing Bespoke service for different width and length of the chain.



## BYENZO'S INITIAL ENGRAVING SERVICE

*'Tailor-made the jewelry into the most unique and special one'*

One of the most popular and beloved service from ByEnzo is the initial engraving service. Any characters like English, Chinese and other languages are possible, even hand-scripted font style. In ByEnzo, we use our skills and technologies to make you a jewelry designer.

ByEnzo believed that handwritten engraving scripts on the changeless Platinum jewelry could be significant. Have you ever imagined that your writing can appear on a piece of precious jewelry? Now, you can do it because of ByEnzo. We can capture and freeze the moment and keep it in the most beautiful Platinum 'container'. Even though time passes, regardless, the most memorable seconds were kept forever.

The initial engraving process is simple. What you have to do is to write down the font you wish to be engraved, and our designer will do the rest for you. Or, if you have no idea how to design your initial, then our designer can create a font style for you.

There is no limitation on what to engrave and where to engrave. Only within the space provided on the clasp, you can carve anything like characters, symbols, or patterns. Please deliver your creativity, and we will turn your design into reality. ByEnzo promises to provide the most delicate and flawless craftsmanship, and we are waiting for the next story to be told.





# *Beautifully Made*

## *Mechanical Linking Device*

Art comes from detail, which determines success or failure. ByEnzo believes that the ultimate aesthetic significance of a man's jewelry is not only to show the appearance of the atmosphere but also to contain a calm inner. Therefore, the clasp attached to the bracelet or necklace has its practicability and beauty. From your point of view, we fully understand that you want to keep the jewelry in the best condition and avoid bumping and falling, so we design an excellent and reliable clasp that is not easy to fall off.

ByEnzo's dual insurance device perfectly solves your worries, the dual security lock can firmly fasten the chain together, in your daily life, or during exercises, the dual security device will never fall off. Besides, the manual tapping diamond grid not only improves the beauty of the clasp but also enhances the durability of the dual security device.

Even though it takes more time to create ByEnzo's clasp than an ordinary one, which requires a higher level of craftsmanship skills as well, we believed it worths the time. Although the production process takes a longer time, ByEnzo thinks that to ensure its safety, this is necessary. Craftsman spirit is the only driving force to promote our innovation and pursuit of perfection from beginning to end.

Our mission is to listen to your story and make your dreams come true. ByEnzo sincerely hopes to become a unique and extraordinary existence for your success.

The above bracelet is a double buckle men's bracelet in the Earl series, and the other chain designs are detailed on page 17.



THE EARL BRACELET COLLECTION

## STANDARD

---



Ref. 5PR011B

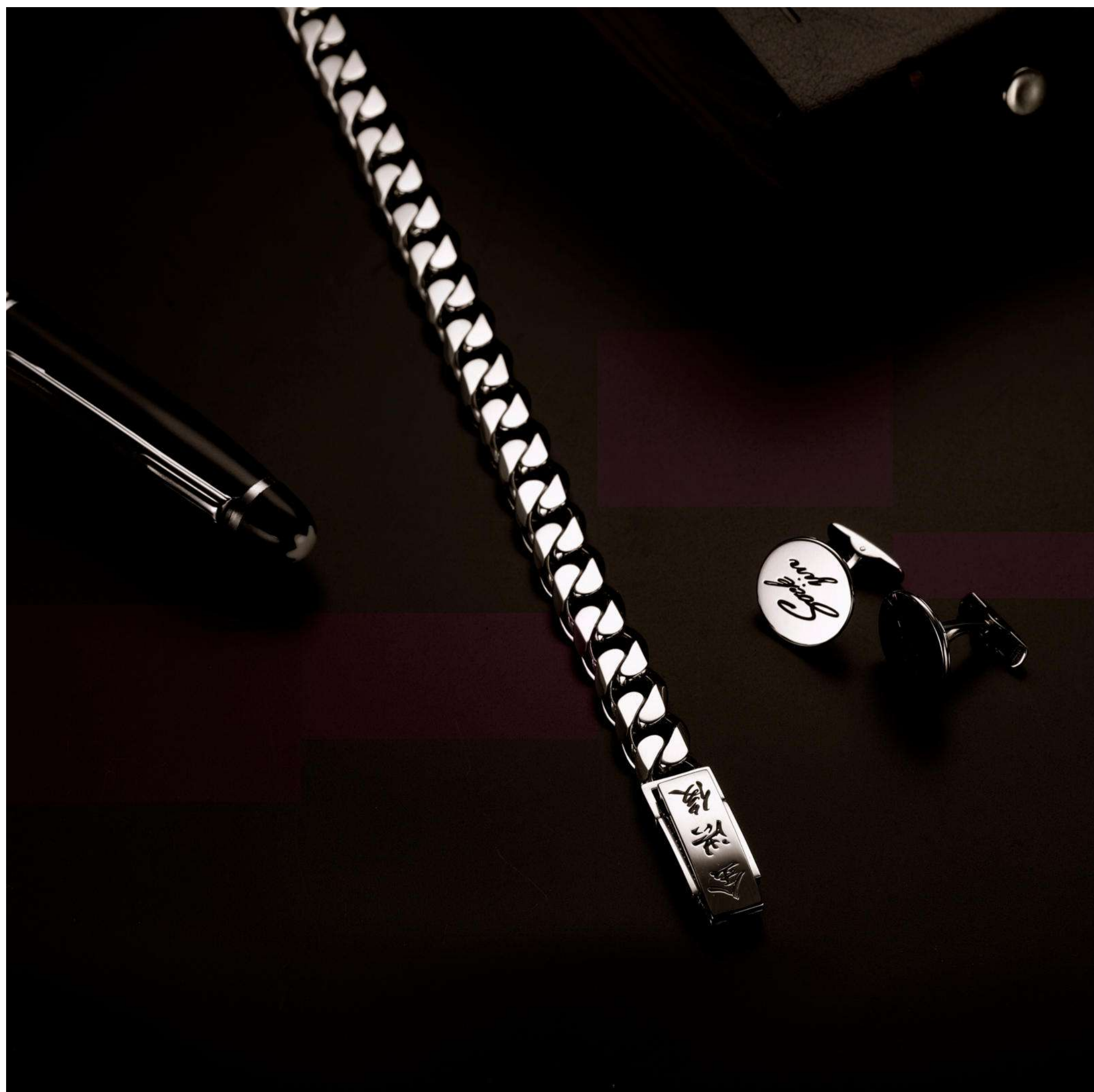
Material: Platinum 950

Width: 5, 7, 8, 10 mm

Length: 17-24 cm

Chain Style: Cuban Chain





*The standard bracelet adapted Cuban chain design, made from PT 950. Platinum jewelry can deliver a unique dense feeling that no other metal can provide. The standard platinum bracelet in the Earl series is the most classic style, with a cool, refined, clean, and elegant design, which could be one of your best companions during your day. Each chain is processed by the hands of our master-level artisans to ensure the best quality.*

*In order to present the chain in a perfect vertical alignment, every single chain is being processed and assemble carefully. This is our insist on jewelry making spirit, and by upholding the craftsmanship spirit, we promise that you can feel the most extravagant and unadorned quality.*





THE EARL BRACELET COLLECTION

## DUAL

---

Ref. 5PR015B  
Material: Platinum 950  
Width: 6, 7, 8, 10 mm  
Length: 17-24 cm  
Chain Style: Cuban Chain







*The Dual Chain bracelet adapted Cuban chain design, made from PT 950. Platinum jewelry can deliver a unique dense feeling that no other metal can provide. The gaps between chains are finely processed to achieve perfect alignment, repeatedly undergoing inspection for the best outcome. The dual bracelet consists of twice the amount of chains than the standard chain, which delivers a smoother and sleeker tactility and could enhance the wearing experience with greater comfort.*

*This is one of the bestselling items from the Earl Collection, not only because of the mannish temperament but also its claim and still images. You can feel the ultimate smooth texture from Platinum, which is a piece of tailor-made jewelry for a gentleman like you.*



THE EARL BRACELET COLLECTION

## LOCK PLATINUM CHAIN

---



Ref. 5PR021B

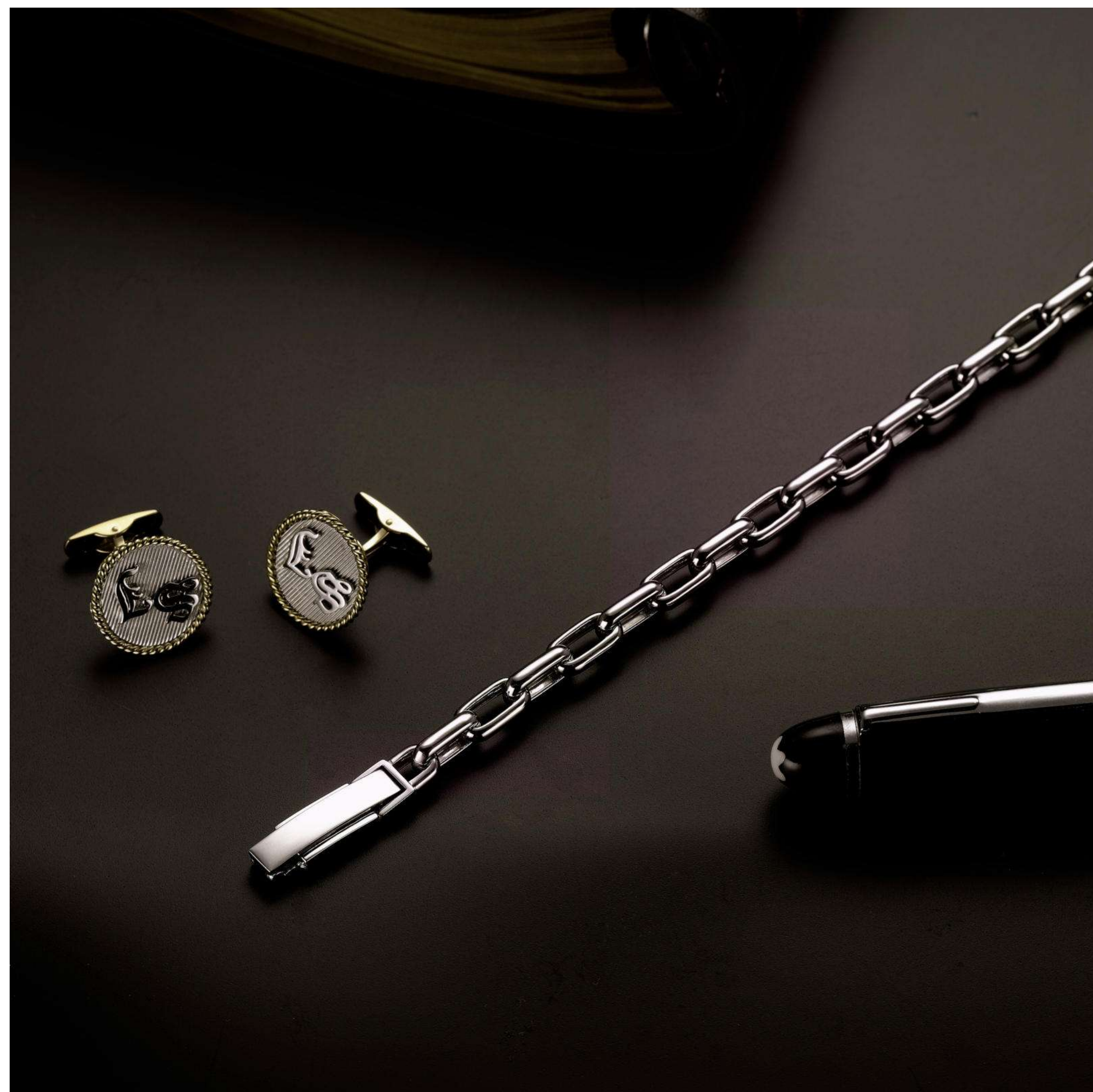
Material: Platinum 950

Width: 4, 5, 6, 7 mm

Length: 17-24 cm

Chain Style: Lock Chain





The chain bracelet is traditional chain design, all made of PT950, with other metal that cannot provide a sense of weight. The Earl series Chain Platinum bracelet is the best to represent both platinum dense sense and chain style masculine charm, vivid and dynamic appearance.

The chain style best represents men's indomitable spirit and a perfect display of simplicity and beauty. This necklace is the preferred design for everyday jewelry and is suitable for your daily work or sports. This model has not only embraced the dense feeling of the standard and dual styles but also reflects the mannish sensation from the chain style.





THE EARL BRACELET COLLECTION

## CIRCULAR LOCK

---

Ref. 5PR019B  
Material: Platinum 950  
Width: 4, 5 mm  
Length: 17-24 cm  
Chain Style: Circular Lock Chain







*The Circular Lock Chain bracelet adapted a unique chain design, made from PT 950. Platinum jewelry can deliver a unique dense feeling that no other metal can provide. Among the Earl Collection, the circular lock design not only possesses the dense temperament from Platinum but also delivers a subtle feeling.*

*By looking at the mellow circular locking chain, imagine that represented the fineness and exquisite emotions of a man. This is a perfect piece of jewelry that fits your everyday outlook at any circumstances.*



THE EARL BRACELET COLLECTION

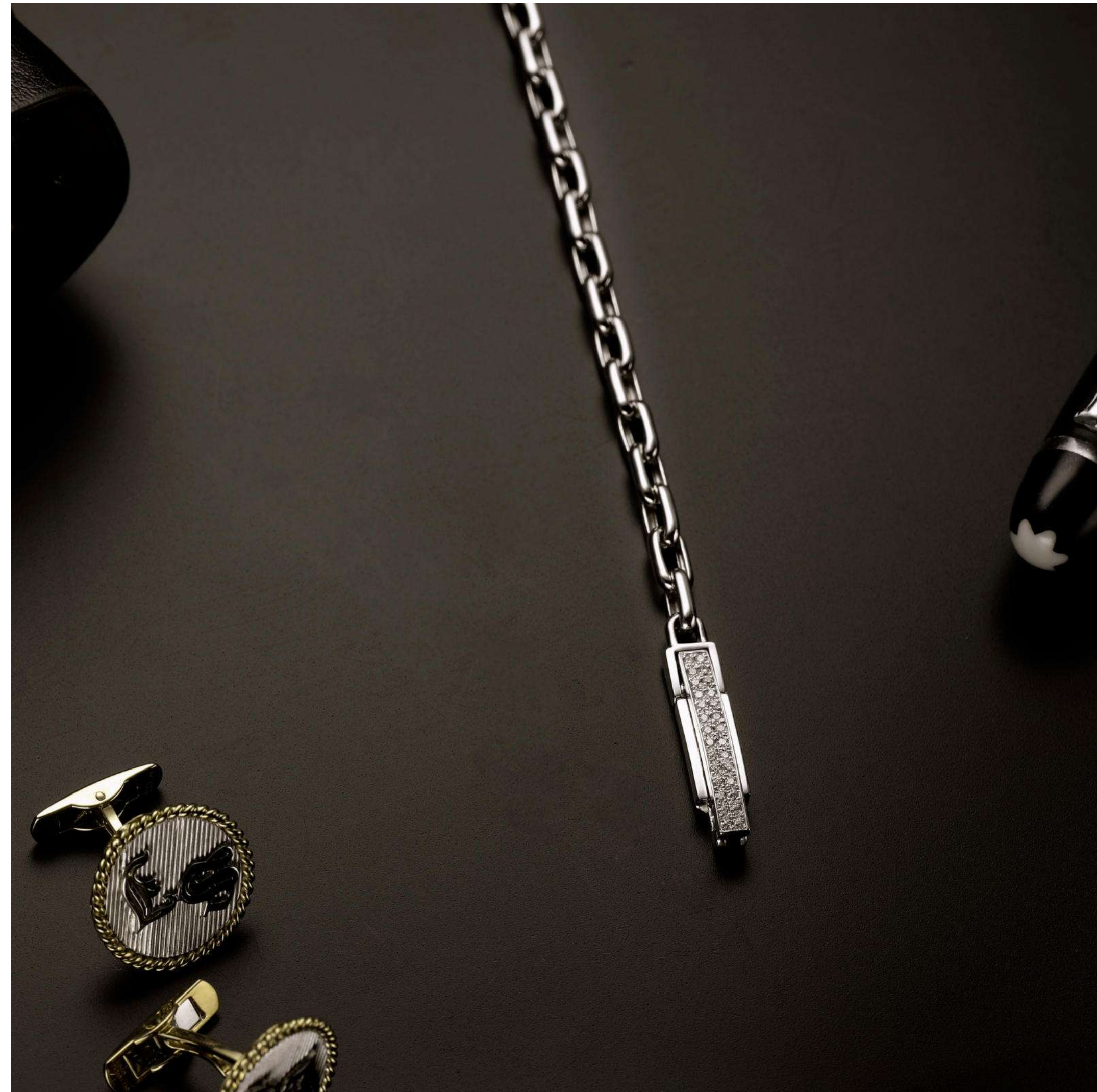
## DIAMOND LOCK

---



Ref. 5PR021BDIA  
Material: Platinum 950  
Width: 4, 5 mm  
Length: 17-24 cm  
Chain Style: Lock Chain





*The Diamond Lock Chain style is our representative work of the splendid and magnificent design, with the setting of 0.2 carats of diamonds on the clasp. This is an elegant and exquisite bracelet style that featured with the sparkle of diamonds. Fashionable design with the most premium Platinum and diamonds, this is the best mixture in striking a balance between the masculine and classic temperament.*

*If you are looking for a piece of lustrous jewelry without being too exaggerated, then this is the one.*







THE EARL COLLECTION

# PLATINUM NECKLACE

---

*Simple, Pure, and Dense*

*Platinum necklace is your best companion  
during your life journey*

Perhaps everyone has a dream to pursue, and a heart to challenge, looking forward to excellence and challenging themselves. ByEnzo sees that you want to challenge yourself and pursue excellence, and only platinum can be the jewel of your life. Platinum is born with a dense and heavy feeling, where its silver-ish light symbolizes every bright spot in your life, and ByEnzo always accompanies every bright spot of you.

ByEnzo defines the Earl series design concept as 'Simplicity is the ultimate Sophistication'; the simple design contains many details. We believe that the devil is in the details, so the whole production process remains traditional, relying on the exquisite craftsmanship of the artisans to make the perfect jewelry.

Platinum and your charm are so pure and clean that it is difficult to look away. You will find that platinum shines more brightly than other metals. We believe that only the highest platinum is worthy of the best of you. In the Earl necklace series, we offer four different styles, whether behind which there is a different story. The Earl series is the perfect combination of exquisite craftsmanship and aesthetics of ByEnzo's work.

ByEnzo has adhered to the spirit of craftsmanship for decades; we comply with the enthusiasm for excellence. Our mission is to create jewelry works that belong to men. This is our belief, and the purpose we have been achieving all the time. Once you become the wearer of ByEnzo's jewelry, you will feel the value of platinum jewelry and its unique position, because platinum jewelry is not only a piece of jewelry but also carries your story, a companion who can venture into the world with you.





## STANDARD

---

Classic is the best, no matter what era, and this is the most luxurious and classic men's model. The Earl Collection unites simplicity with elegance, and every chain is well connected with the nature and lustrous shine from Platinum. Platinum is not only the highest quality precious metal, but its density makes it one of the most durable and enduring precious metal. This is an elegant and minimalistic must-have everyday wear for a man.

The Standard Platinum Chain goes well with formal suits or smart casual. The mannish look of the chain fits well with a masculine and mature outfit as well.

Ref. 5PR011N  
Material: Platinum 950  
Width: 5, 6, 7 mm  
Length: 40-65 cm  
Chain Style: Cuban Chain



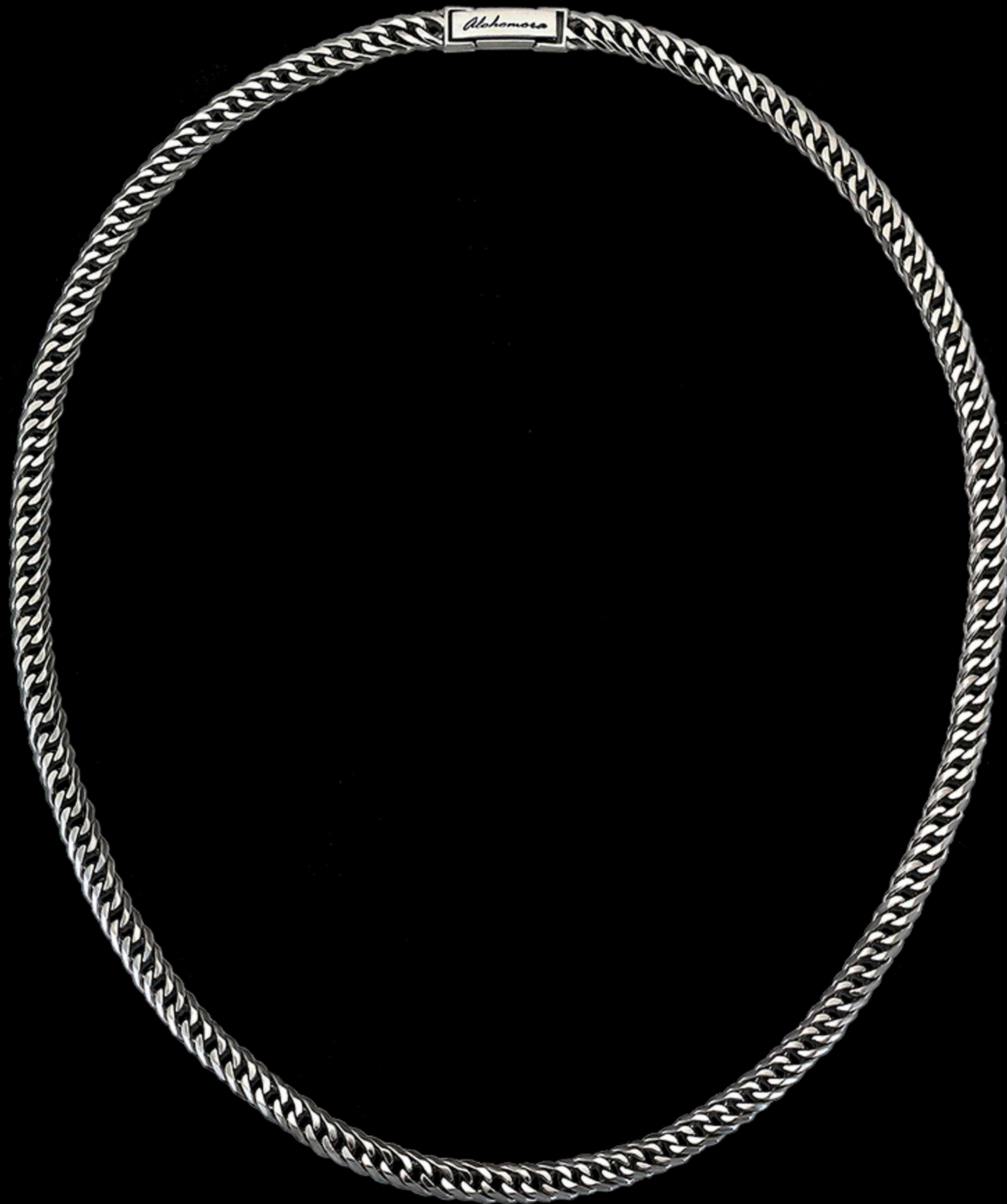
*The standard necklace adapted Cuban chain design, made from PT 950. Platinum jewelry can deliver a unique dense feeling that no other metal can provide. The standard platinum bracelet in the Earl series is the most classic style, with a cool, refined, clean, and elegant design, which could be one of your best companions during your day. Each chain is processed by the hands of our master-level artisans to ensure the best quality.*

*In order to present the chain in a perfect vertical alignment, every single chain is being processed and assemble carefully. This is our insist on jewelry making spirit, and by upholding the craftsmanship spirit, we promise that you can feel the most extravagant and unadorned quality.*



The Earl Men's Necklace Standard Platinum Chain  
Ref. 5PR011N





## DUAL

---

The Dual chain design consists of two times more joints than Standard Chain style; it delivers a more sophisticated and dedicated feeling. When classic design meets with the best material, this is the must-have jewelry, and you should see posse. Platinum is a natural material which will never fade even time passes; therefore, it is the best symbol to represent changelessness and eternity.

The Dual Platinum Chain goes well with formal suits or smart casual. The mannish look of the chain fits well with a masculine and mature outfit as well.

Ref. 5PR015N  
Material: Platinum 950  
Width: 6, 7 mm  
Length: 40-65 cm  
Chain Style: Cuban Chain



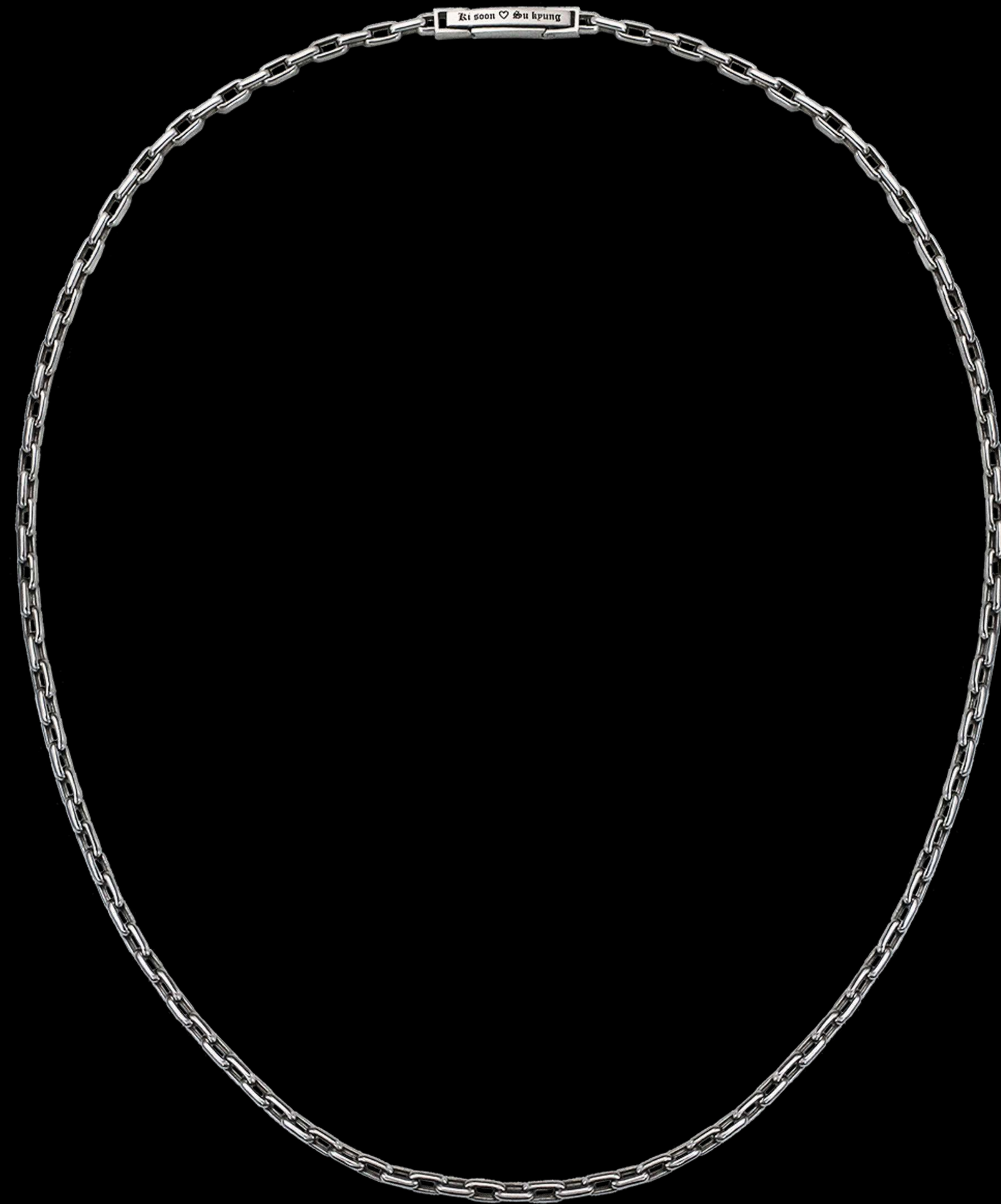
*The Dual Chain necklace adapted Cuban chain design, made from PT 950. Platinum jewelry can deliver a unique dense feeling that no other metal can provide. The gaps between chains are finely processed to achieve perfect alignment, repeatedly undergoing inspection for the best outcome. The dual bracelet consists of twice the amount of chains than the standard chain, which delivers a smoother and sleeker tactility and could enhance the wearing experience with greater comfort.*

*This is one of the bestselling items from the Earl Collection, not only because of the mannish temperament but also its claim and still images. You can feel the ultimate smooth texture from Platinum, which is a piece of tailor-made jewelry for a gentleman like you.*



The Earl Men's Necklace Dual Platinum Chain  
Ref. 5PR015N





## Lock Platinum Chain

---

Finding a piece of necklace that can fully express your personality and charisma could be difficult. While in ByEnzo, we are offering the Lock Chain style that is the most representable jewelry style for men, a synonym of doughty and masculine, where you can sense the strength from the design. Moreover, Platinum is famous for its heavy dense; thus, the lock chain style could exhibit the strength, resistance, and power withhold by you.

If you are looking for a piece of jewelry to demonstrate the mannish temperament and charm, you should not overlook the Lock chain necklace from the Earl Collection. This design could set off your will to pursue a lifetime goal.

Ref. 5PR021N

Material: Platinum 950

Width: 3, 4, 5 mm

Length: 40-65 cm

Chain Style: Lock Chain



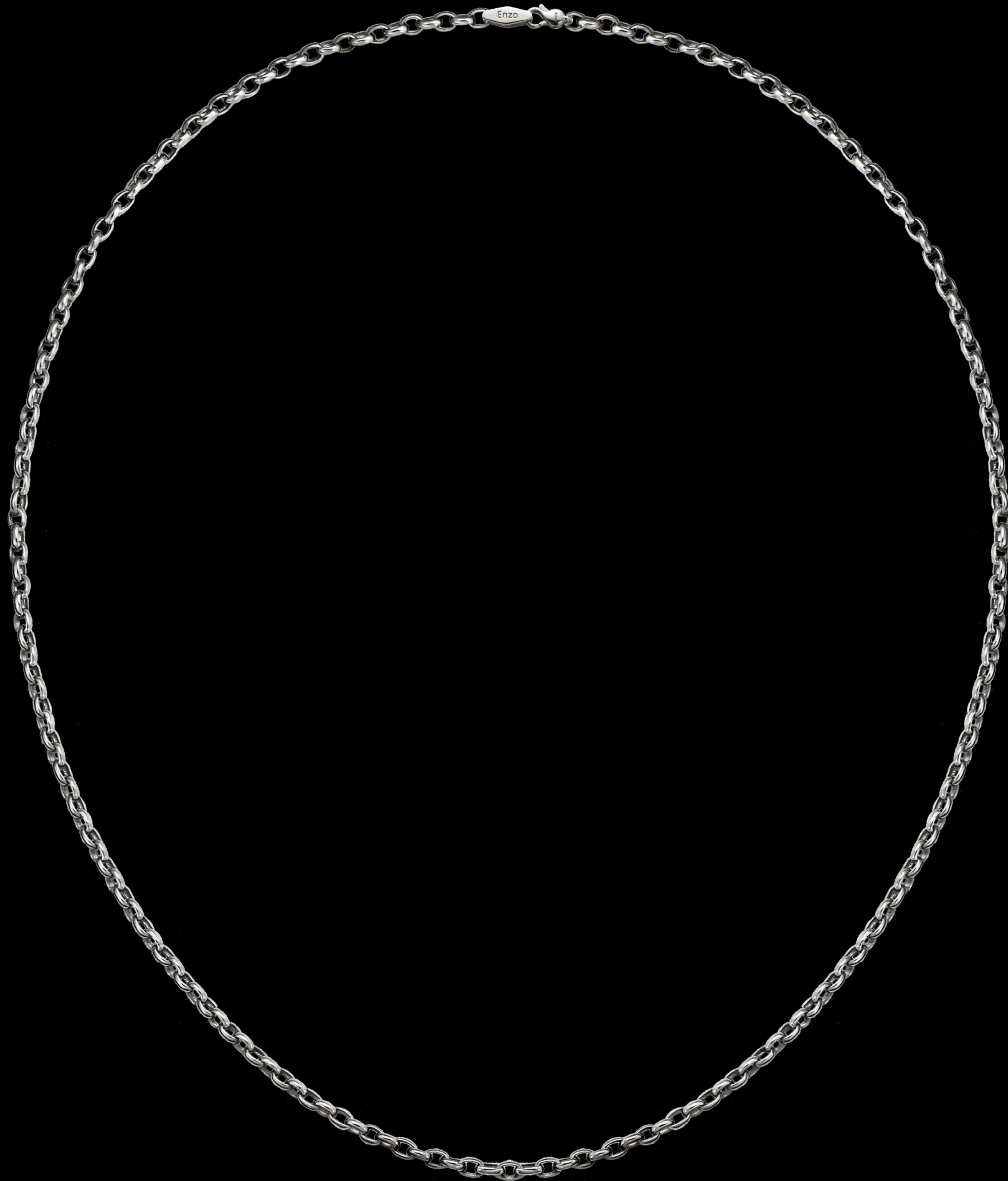
*The chain necklace is traditional chain design, all made of PT950, with other metal that cannot provide a sense of weight. The Earl series Chain Platinum bracelet is the best to represent both platinum dense sense and chain style masculine charm, vivid and dynamic appearance.*

*The chain style best represents men's indomitable spirit and a perfect display of simplicity and beauty. This necklace is the preferred design for everyday jewelry and is suitable for your daily work or sports. This model has not only embraced the dense feeling of the standard and dual styles but also reflects the mannish sensation from the chain style.*



The Earl Men's Necklace Lock Platinum Chain  
Ref. 5PR021N





## Circular Lock

---

The Circular Lock chain design has a relatively unique design as the lock chains are relatively round, delivering a mellow and soft temperament. Circular Lock chain design is relatively rare to see among men's jewelry, while ByEnzo sees an excellent fit towards the gentleman. The round shape of the lock is carrying a symbolic meaning of the soft and untouchable inner world of a man, the gentle, warm-hearted, and delicate side.

The Circular Lock Platinum Chain goes well with formal suits or smart casual.

Ref. 5PR019N

Material: Platinum 950

Width: 3, 4, 5 mm

Length: 40-65 cm

Chain Style: Circular Lock Chain



*The Circular Lock Chain bracelet adapted a unique chain design, made from PT 950. Platinum jewelry can deliver a unique dense feeling that no other metal can provide. Among the Earl Collection, the circular lock design not only possesses the dense temperament from Platinum but also delivers a subtle feeling.*

*By looking at the mellow circular locking chain, imagine that represented the fineness and exquisite emotions of a man. This is a perfect piece of jewelry that fits your everyday outlook at any circumstances.*



The Earl Men's Necklace Circular Platinum Chain  
Ref. 5PR019N





THE EARL COLLECTION  
PLATINUM PENDANT

---

*Creating the ultimate value through  
excellence at each step*

ByEnzo continues to develop and design novel, exquisite, high-quality jewelry, and our pendant design is a fusion of the traditional model and also adding a lot of ingenious design concepts. The such as adventure series is one of the jewelry worthy of your collection, platinum with 18K gold and extreme manual carving is unique in the world. ByEnzo launched three sets, including adventure series, mythology series, and cross series, each of which is inspired by life and mythology. ByEnzo believes that even the most ordinary life has its flash, so our pendant design is also very diversified.

From our diversified model, we can feel the real craftsmanship and craftsman spirit; we require the ultimate degree of completion, and adhere to the concept of "Simplicity is the Ultimate Sophistication". Be sure to make the perfect appearance of every detail, giving you visual enjoyment and satisfying the best tactile experience. To provide you with the best experience, artisans need pastoral casting, grinding, and checking the completion of each component to present it to you in the perfect form. We believe that the jewelry is worth waiting for, to live up to your expectations, we promise the best jewelry.



PENDANT COLLECTION

# THE ADVENTUROUS PENDANT



The Fortune Compass  
Ref. 3PS181

*Perfect match between the elegance of  
Platinum and the luxurious 18K Gold*

Start your amazing and fantastic voyage with the Fortune Compass and rest with the Sea Anchor. A journey that you will never regret and the best memories will rest in your mind forever. The Adventurous Collection has two pendants, including the Fortune Compass, and the Sea Anchor. Our design aims to deliver a message of 'Dream high, achieve higher,' do not hesitate to pursue your dream even there are obstacles.

We believed that the Fortune Compass would lead you through the difficulties and strike your goals. But, remember to take a rest with the Sea Anchor during your adventure.



The Sea Anchor  
Ref. 3PS183



## THE ADVENTUROUS PENDANT

### 3PS181

The first work of the adventure series, "Fortune Compass", life is like a vast ocean, we strive to pursue ideals in the sea every day, and the needle of luck is not only a tool to guide the direction, but also symbolizes the compass of luck, hoping to give the wearer luck and become a companion on the other side of success.

Please take a closer look at the details, including the junction of the four sides, the Arabesque pattern, and the rotating device of the compass that will surprise you with its precision.

Ref. 3PS180 / 3PS181 / 3PS182  
Material: Platinum 950+18K Gold  
Radius: 29.1 mm  
Length: 40.6 mm  
Thickness: 5.6 mm



*Back Plate*

*There is a hollowed-out Arabesque pattern design, a map looking graphic, symbolizing the sea and land. The Arabesque pattern is lifelike and adds a sense of vividness.*





*When Kinetic Art come across ByEnzo's Pendant:  
The Spinning Fortune Compass Platinum Pendant*



The Adventurous Collection

The Adventurous collection made from Pt 950 and 18-karat gold includes extraordinary pendant embodies Kinetic art and Arabesque pattern. This collection is characterized by ByEnzo's genuine values philosophy, while splendidly hand-crafted in representing the lifestyle of modern men. A symbiosis that reveal both individuality and freedom.

Kinetic art works place great emphasis on mechanized movement, by embracing the machine, art could integrate itself with everyday life. In the Adventurous collection, the Fortune Compass is the best produce of how Kinetic Art come across Platinum. The highlight belongs to the spinning helm in the Compass which is a symbolic design of 'Freedom', the Fortune Compass is your reliable companion for everyday wear, made from the changeless Platinum and lustrous 18-karat gold.



Ref. 3PS180



Ref. 3PS181



Ref. 3PS182



## THE ADVENTUROUS PENDANT

### 3PS183

The second "Sea Anchor" of the adventure series is full of steady sea temperament, the shape of the anchor, and the exquisite carvings behind it, and you would find that its fine details are so attractive, and the front and back designs are majestic of the sea. The whole pendant is formed by combining four separate parts and is assembled to form a pendant with a definite edge. In particular, the small details are hidden on the back of the jewelry with a large sailing boat, and the momentum of the wind and waves, which is a perfect reflection of the design concept, the continuous challenge, and the spirit of overcoming difficulties. This is one of the most outstanding works from ByEnzo.

Ref. 3PS183

Material: Platinum 950+18K Gold

Radius: 29.1 mm

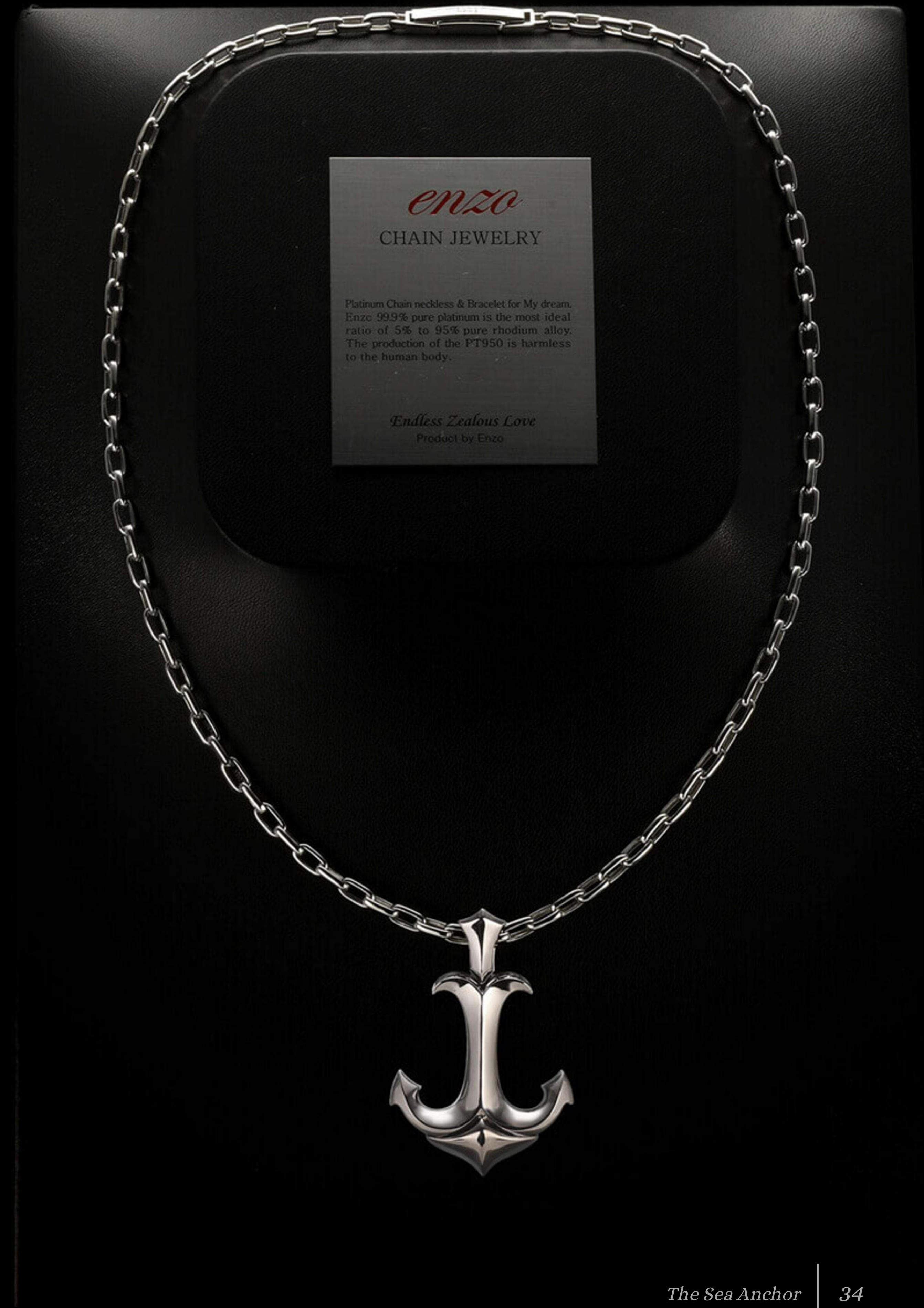
Length: 38.7 mm

Thickness: 5.6 mm



*Back Plate*

*By having a great contrast, the front side of the pendant is much simpler. However, every single parts of the pendant are handcrafted with extreme pursue of excellence. You are able to feel the craftsmanship.*





PENDANT COLLECTION

# THE OLYMPIANS

*Surprised by the fine details  
from the Olympians*



APOLLO  
Ref. 3PS107



ZEUS  
Ref. 3PS117



POSEIDON  
Ref. 3PS105

The Olympian Collection fully interpreted our brand philosophy of ‘Simplicity is the Ultimate Sophistication’, since the appearance of the pendants from the Olympian Collection has a simple look. However, by looking into the details, you can see all the sparkling details hidden by our designer. We are confident to say, you will be surprised by our work, and this is a collection that gives you more surprises when time goes by.

Our designer was inspired by the myth and therefore created the Olympian collection. In this collection, there are three pendants, including Zeus, Poseidon, and Apollo.



## THE OLYMPIANS COLLECTION

### 3PS117

Zeus is the God of gods, regarded as charisma leader with royal sensation. The design of this PT950 Platinum pendant is delivering a splendid impression and the masculine temperament. Having a simple design in the front with sophisticated Arabesque pattern on the back, a perfect balance between simplicity and sophistication, an ideal choice for people who prefer a simple yet unusual design.

Ref. 3PS117

Material: Platinum 950

Radius: 40 mm

Length: 25 mm

Thickness: 13 mm



#### **Back Plate**

*Presenting the perfect curve and alignment, not only showing the dense sensation of Platinum. By comparing the front and back design, you can feel the beauty of contrast as the Arabesque pattern fits well with the flawless design in the front.*





## THE OLYMPIANS COLLECTION

### 3PS105

The God of the Sea, Poseidon who is well-known with the power to control waves and the ability to travel in the sea freely. By thinking of Poseidon's power ByEnzo was inspired by the symbolic Trident that Poseidon possesses. The anchor-shaped Pendant is to appreciate the beauty of strength from the sea and waves. We believed that the anchor is a symbol of freedom, and by wearing the Pendant, you can be free to seek the romance from the sea.

Ref. 3PS105

Material: Platinum 950

Radius: 29 mm

Length: 23 mm

Thickness: 4 mm



#### *Back Plate*

*Presenting the perfect curve and alignment, not only showing the dense sensation of Platinum. By comparing the front and back design, you can feel the beauty of contrast as the Arabesque pattern fits well with the flawless design in the front.*





## THE OLYMPIANS COLLECTION

### 3PS107

The sun god Apollo, the sun is one of the origins of life, warm and warm, the designer adopted the concept of time and combined the appearance of the sun as the design concept. The pendant is a perfect circle, and the outer ring is engraved with one to twelve Roman numerals representing the month; with a date engraved in the inner circle, you can embed diamonds in specific positions of the day and month to mark the special days of your life.

Ref. 3PS107

Material: Platinum 950

Radius: 26 mm

Length: 26 mm

Thickness: 4 mm



#### *Back Plate*

*Arabesque pattern is adapted in the design of the Apollo pendant but as you look more carefully into the details of the pendant. You can find out four Roman numbers which represented the year, if you would like to bespoke the date of year of your own, please contact us for further information.*





PENDANT COLLECTION

# THE CROSS



Star of Bethlehem  
Ref. 3PS109



St. Mary  
Ref. 3PS098



Eternal des Francs  
Ref. 3PS152



## THE CROSS COLLECTION

### 3PS152

Inspiration from the style in the Renaissance period, this cross design represented a vintage sensation with a dignified temperament. The decorations on the corners used to be patterns that were commonly used in the Renaissance period. Even if you have no religious background, this is a style you can wear as a piece of vintage style jewelry.

Ref: 3PS152  
Material: Platinum 950  
Radius: 28 mm  
Length: 44 mm  
Thickness: 7 mm



*Back Plate*

*The pattern on the back designed originated from the middle East, promoting the glorious and vintage feeling, and the space left in the middle is used for engraving.*





## THE CROSS COLLECTION

### 3PS109

The Bethlehem Star is one of the brightest stars in the wintertime; it is also named as the Christmas Star. To create a star-like effect, our designer decided to add another layer on top of the cross pendant. It looked like the Bethlehem Star that shinning on top of the sky.

This pendant is made from PT 950, therefore the natural glow from Platinum is resplendent and it looks even more splendid with the dual cross design.

Ref: 3PS109  
Material: Platinum 950  
Radius: 25 mm  
Length: 44 mm  
Thickness: 6.7 mm



#### *Back Plate*

*This pendant had shown the beauty of symmetric, since the ancient period, people have a great interest in a symmetrical pattern, and therefore, we have adapted the most commonly used design from the Renaissance period.*





## THE CROSS COLLECTION

### 3PS098

Diamonds are set on the cross with a pure and dignified sensation; our design inspiration was originated from the St. Mary portrait in the catholic church, where you might find peace from starrng at the portrait. The sparking from the diamond acts like the sunlight coming through the window, embracing you with warmth.

Ref: 3PS098  
Material: Platinum  
950+Diamond  
Radius: 22 mm  
Length: 29 mm  
Thickness: 2.3 mm



*Back Plate*

*To echo the pureness temperament of the pendant design, the plain back design was considered. Other than the two cross designs, simplicity could even see the pureness without any different patterns.*





## THE OFFICIAL BYENZO RETAILER



Every product is manufactured solely in South Korea. There are both offline and online selling channels, including the only offline store located in Seoul, South Korea; where our online distribution channel is stated as follow: [www.byenzojewelry.com](http://www.byenzojewelry.com) & [www.byenzojewelry.cn](http://www.byenzojewelry.cn).

Besides, every item sold in ByEnzo has a unique product code for identification and verification. This is to trace back the whole manufacturing processes and person-in-charge.

The designs, the company's logo, and the company name are protected by the Republic of Korea and international copyright laws. Reproduction and distribution of the products without written permission of the sponsor is prohibited. All rights reserved.

[www.byenzojewelry.com](http://www.byenzojewelry.com)

EXPLORE AND DISCOVER MORE ON [BYENZOJEWELRY.COM](http://BYENZOJEWELRY.COM)

All intellectual property rights such as trademarks, service marks, trade names, designs and copyrights are reserved. Nothing contained in this website may be reproduced without written permission. ByEnzo reserves the right at all times to modify the models featured in the present website.

*By enzo*